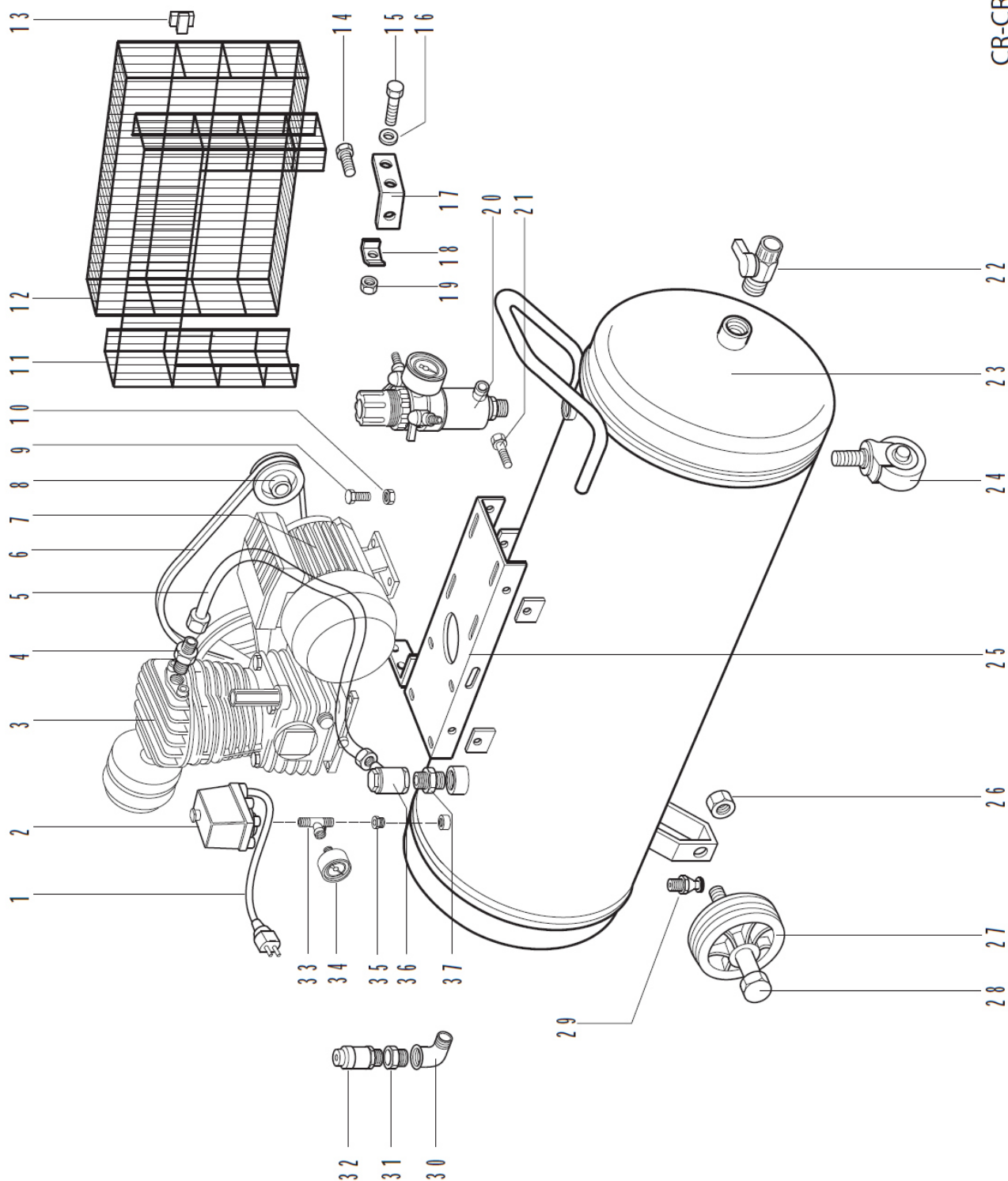


CR-CRM 152-203



| Rif. | Codice | Descrizione | Description |
|------|-----------|-------------------------|---------------------|
| 1 | 7301032 | Cavo | Cable |
| 2 | 7301829 | Pressostato | Pressure switch |
| 3 | 7370005 | Testata | Head |
| 4 | 7301173 | Nipples | Nipples |
| 5 | 7301266 | Tubo collegamento | Connecting pipe |
| 6 | 1660437 | Cinghia | Belt |
| 7 | 132101060 | Motore | Motore |
| 8 | 1611403 | Puleggia | Pulley |
| 9 | 0030911 | Vite | Screw |
| 10 | 0640091 | Dado M8 | Nut M8 |
| 11 | 7301120 | Copricinghia posteriore | Rear Beltguard |
| 12 | 7301119 | Copricinghia anteriore | Front Beltguard |
| 13 | 7301326 | Tassello | Cap |
| 14 | 0030891 | Vite | Screw |
| 15 | 0030481 | Vite | Screw |
| 16 | 0830101 | Rondella | Washer |
| 17 | 7301167 | Supporto copricinghia | Beltguard support |
| 18 | 7301168 | Piastrina fissaggio | Fixing plate |
| 19 | 0640051 | Dado | Nut |
| 0 | 7301197 | Riduttore | Pressure reducer |
| 21 | 0031151 | Vite | Screw |
| 22 | 7350112 | Rubinetto linea | Line |
| 23 | 7308400 | Serbatoio | Tank |
| 24 | 7301235 | Ruota | Wheel |
| 25 | 7301502 | Basamento | Pumping group plate |
| 26 | 0650141 | Dado | Nut |
| 27 | 7301150 | Ruota fissa | Wheel |
| 28 | 0011221 | Vite | Screw |
| 29 | 7302003 | Rubinetto spurgo | Drain faucet |
| 30 | 3131085 | Curva | Connection |
| 31 | 3140061 | Riduzione | Connection" |
| 32 | 7301948 | Valvola di sicurezza | Safety valve |
| 33 | 7301741 | Raccordo | Connection |
| 34 | 7301162 | Manometro | Pressure Gauge |
| 35 | ----- | Riduzione | Reduction |
| 36 | 7301301 | Valvola di ritegno M | Non return valve |
| 37 | 3133370 | Nipples | Nipples |